



VISTECH AUTOMATION PRIVATE LIMITED

Authorized Solution Provider

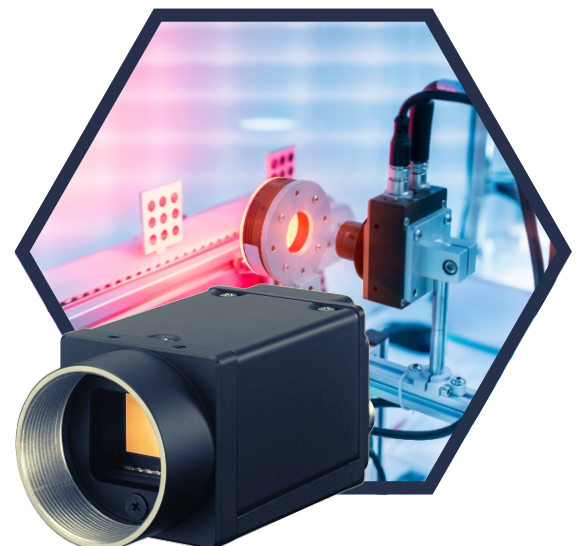
SOLOMON
Vision with Intelligence



TELEDYNE DALSA
Everywhereyoulook™

Part of the Teledyne Imaging Group

Transforming your manufacturing processes



www.vistechautomation.com

Why us?

We pride ourselves on being your local technical distributor for control and automation. Serving industry is our prime focus and we have always specialised in providing our customers with the very best industrial control and automation products.

A broad spectrum of industries depend upon us for our unique commitment in providing a comprehensive quality service.

We also offer the broadest range of value added services available and excel at working with our customers in designing and supplying custom solutions to meet the unique needs of their market.

Multi-domain expertise



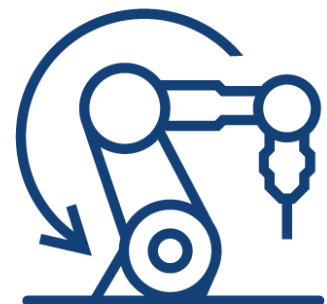
Task Oriented Approach



Customer Centric Service



Professionally Engineered
Solutions



Adaptable and flexible
in delivery

How we work

Leveraging our unique four-step project management process, Vistech specializes in offering turnkey automation engineering projects across a diverse range of industries.

Our years of experience and knowledge of a variety of engineering disciplines are the foundation for our proven approach and the success of the hundreds of complex projects we've undertaken.



1 - Define



2 - Design

3 - Execute



4 - Deliver



Our Products and Services

- Industrial machine vision systems & components
- PC based vision software solution
- AI deep learning software solution
- Barcode readers and verifiers
- 2D & 3D Laser Profilers
- Vision guided robot solutions
- LT & PLC Control panels
- IOT Solutions
- Turnkey Engineering Solutions



Serving all manufacturing industries like automotive, Electronics, FMCG, Food and Beverage, machine building, medicine and pharmaceutical, packaging

Machine Vision Systems

To automate process and quality improvements

- Vision Sensors
- 1D vision systems (line scan cameras)
- 2D vision systems (area scan cameras)
- 3D vision systems

Some of the main applications are as follows :

- Presence/Absence, OK/NG applications
- Inspection (Color, orientation, position)
- Non contact Measurement
- Identification (OCR, 1D & 2D code reading)
- Guidance
- Surface Inspection



Machine Vision Components

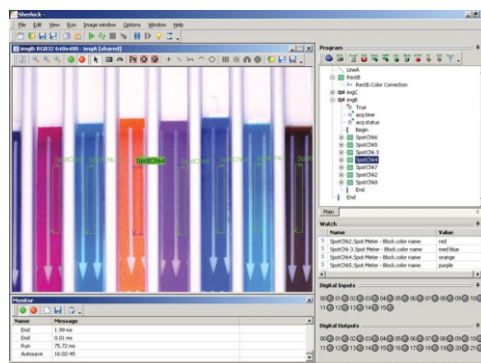
cables



lighting



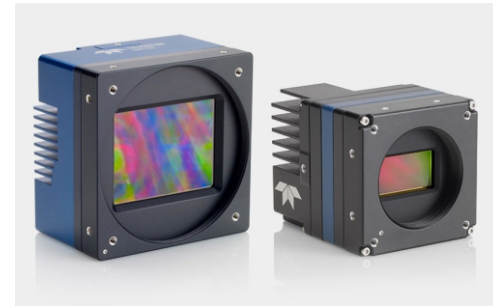
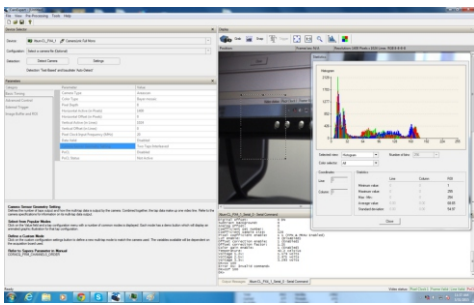
Vision software



Optics

PC based Vision software & AI Deep learning solutions

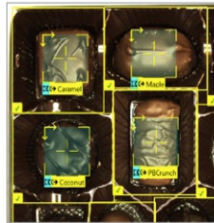
Pc based Vision softwares offer a development environment powerful enough to tackle any vision challenge with the use of multiple high resolution systems



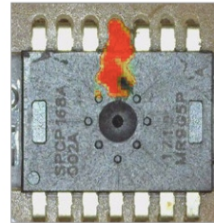
Deep Learning software solves complex applications that are too complicated and time-consuming to program

- Highly complex OCR
- Anomaly detection
- Surface defect Inspection
- Minute part Inspection

Part location and assembly verification



Defect detection



Object and scene classification



Character reading

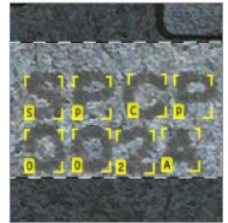
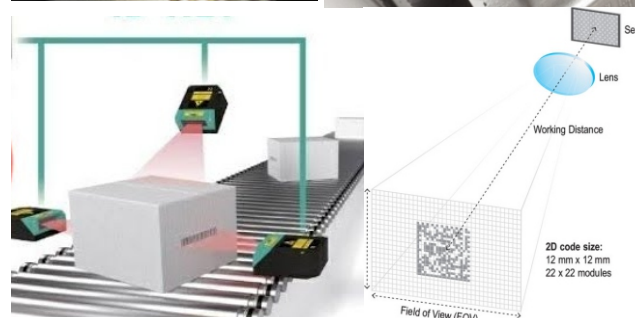


Image based barcode readers use an area array sensor similar to those found in digital cameras to acquire a picture of 1D and 2D barcodes.

- Handheld Barcode Readers
- Fixed Mount Barcode Readers



2D & 3D Laser Profiler

Laser profilers are typically used for measurement applications like profile, width, height, depth, edge, groove, bead, gap, roundness, angle, presence, flatness, deformation, flushness etc

- Beed/Weld Inspection (Automotive)
- Brake pad Inspection (Automotive)
- Clutch plate Inspection (Automotive)
- PCB component verification (Electronics)
- Sim tray Inspection (Electronics)
- Extrusion Inspection (Electronics)
- Injection Mould Inspection (Food & Beverage)
- Package seal Inspection (Food & Beverage)



Laser Profiler

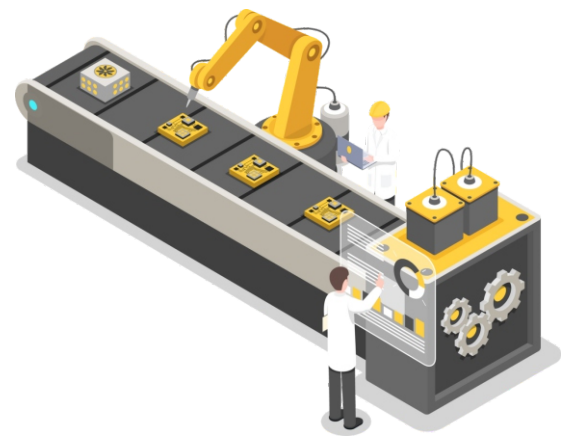
LT CONTROL PANELS

- PLC Control Panel
- VFD Control Panel
- Engine Control Panel
- Starter Control Panel



Poke yoke

- Identify and find source of defects in your existing systems
- Analyse all aspects of results
- Design and development solutions for addressing defects
- Eliminate setup errors and improve production quality
- Reducing development risk and monitor continuous improvement



POKE YOKE

Customised software development



- Develop desktop apps using C# (C-Sharp)
- Design and development user interface for automation solutions through Industrie 4.0
- Eliminate setup errors and improve production quality through IoT and servers
- Reducing development risk ,multiple documentation, avoid duplication and continuous improvement with database monitoring

Industrial PC and Touch Panel PC

- Rack Mount PC
- Touch panel PC
- Vision box PC

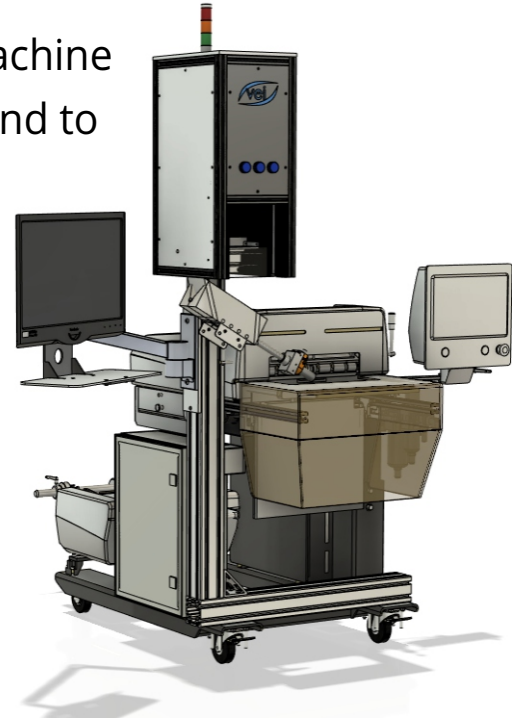


Turnkey Automation Solutions

With development based on 7+ years of extensive machine vision expertise, we Minimise project lifecycles with end to end installation, Implementation, and monitoring

Our turnkey solutions include :

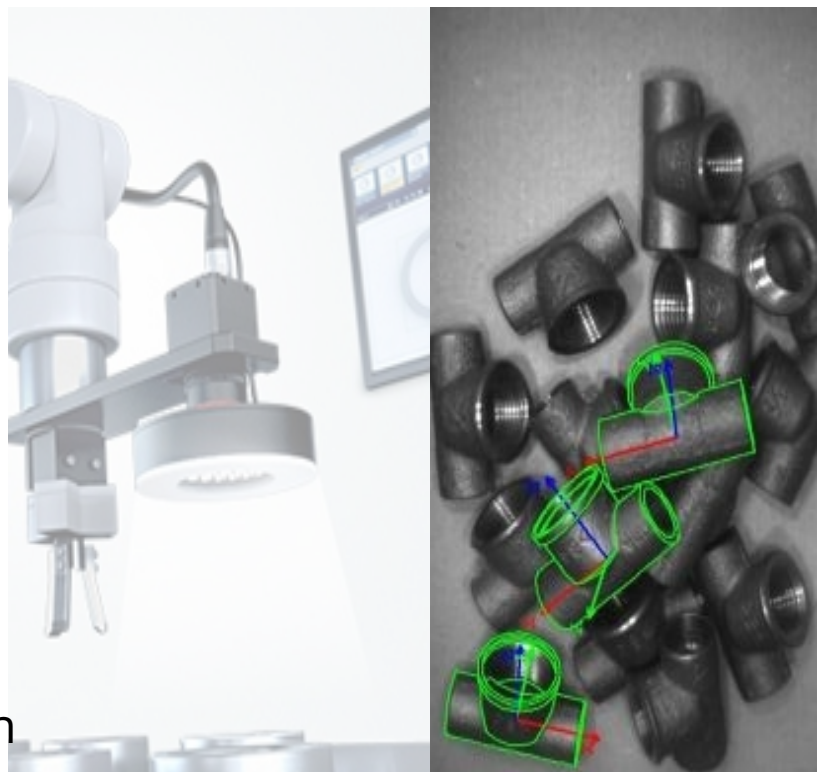
- Electrical control panels
- Vision system Solutions Integration
- Mechanical design and development
- Software and programming integration



Vision Guided Robotic Solutions

Robot vision solution that guides your robot to pick and place a wide range of products.

- Machine loading
- Depalletizing
- Bin Picking
- Multi-point Inspection
- High speed robotic assembly
- vision guided packaging
- Vision guided soldering
- Vision guided bead Inspection





Specialists in High
performance
vision systems

Vistech Automation Pvt Ltd.

No.2 | Malligai Street |
Vivekananda Nagar Thirumuallaivoyal |
Chennai 600 062

✉ sales@vistechautomation.com

☎ +91 9566161539

www.vistechautomation.com